



Futuristic Resilient Fire Safety Strategy With Technology

BUILDING MAINTENANCE CONFERENCE 2019

21st & 22nd Aug 2019 Park Royal Kuala Lumpur

Engr. H.G. Tay CFIFireE

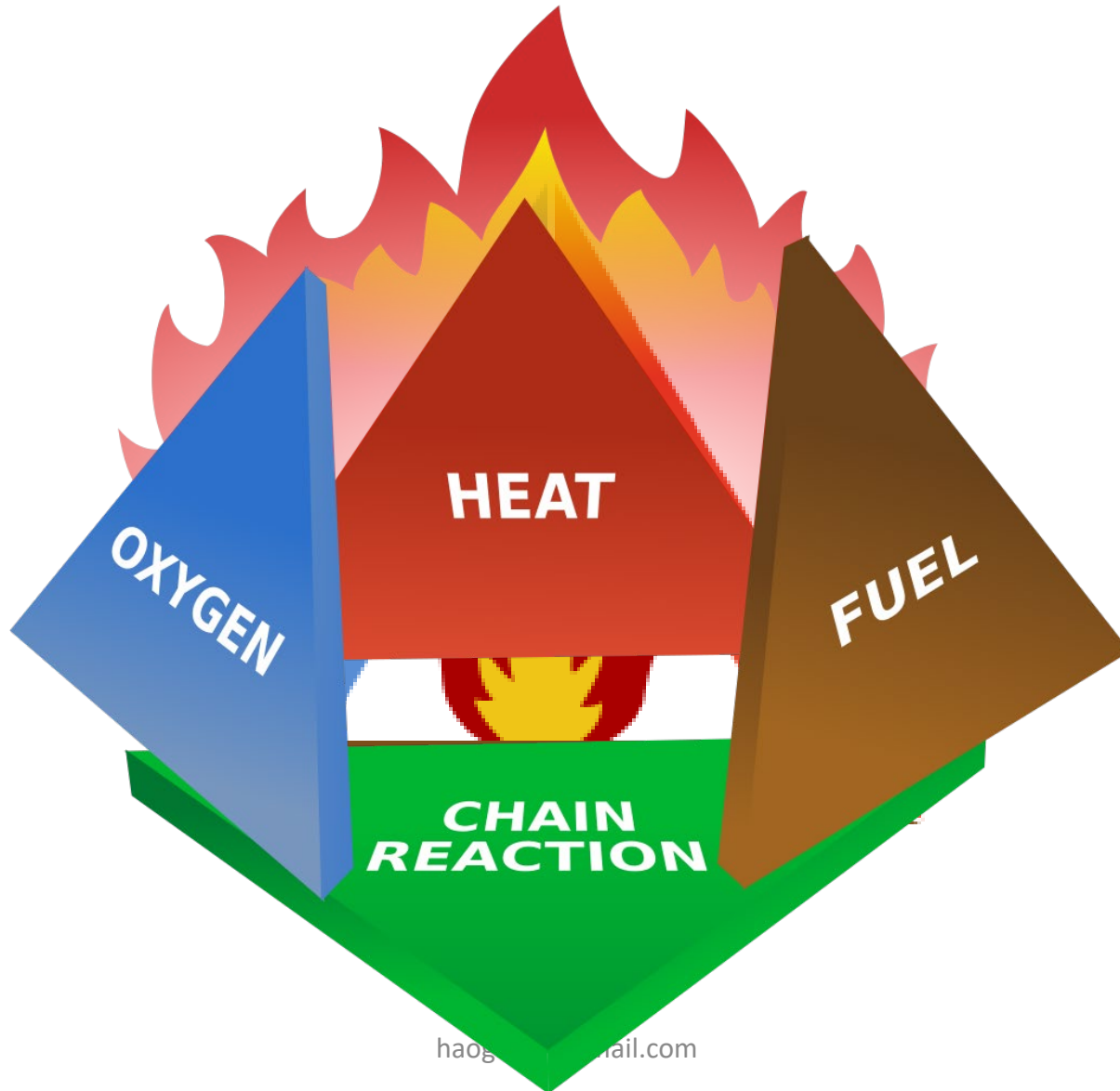
B.Sc. (Hons), M.Sc. Fire Safety Engineering

Principle Fire Safety Engineering Consultant

Fire Safety Engineering Sdn Bhd



Futuristic Resilient Fire Safety Strategy With Technology







Hightech Robotic Ocado Plant Burnt Down





AA-B08



NOT A PERSON'S VEHICLE



ocado
SMART PLATFORM

CREATED IN BRITAIN





West Warwick - Rhode Island "The Station" Fire



Will 3,000 casualties shed light on future fire safety strategy?



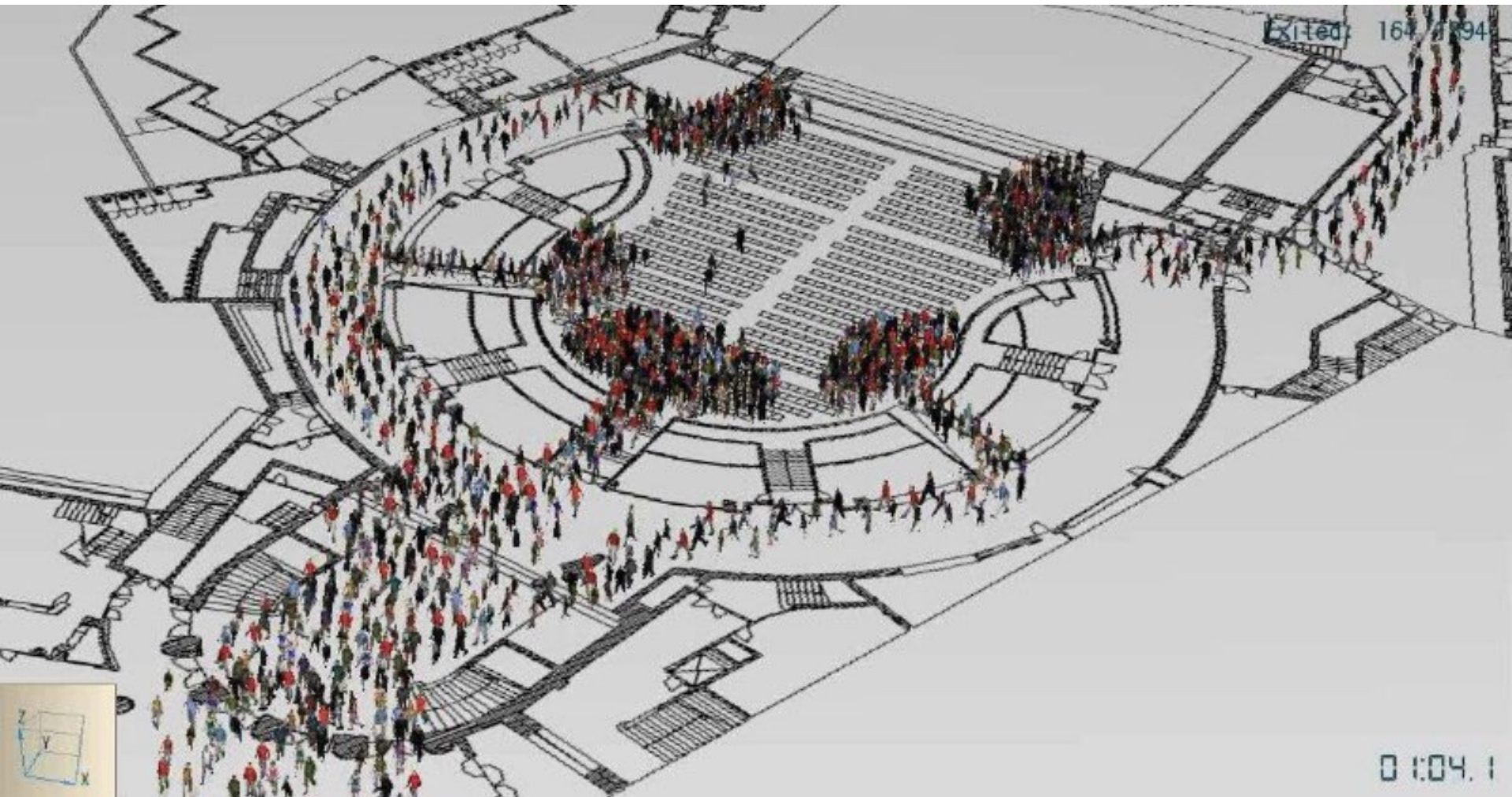


Crisis Management Mass Evacuation Strategy





Crisis Management Mass Evacuation Strategy





Futuristic Resilient Fire Safety Strategy With Technology



When in Peace Prepare for War

(Sun Tzu)



Futuristic Resilient Fire Safety Strategy With Technology

Fire Safety Strategies

- * Fire safety strategy tailor toward fire risks NOT just legislative compliance
- * Emphasis on Pre-Fire instead of Post Fire scenario
- * Fire protection systems should be quality-based and “Fit for purpose” instead of commercial based
- * Qualified Fire Engineers should be engaged during preliminary design
- * Adopt preventive maintenance
- * Adopt fire safety campaign
- * Provide fire safety training
- * Adopt ERP, ERM , ERT, establish EVAC Program
- * Conduct annual fire risks assessment



Futuristic Resilient Fire Safety Strategy With Technology

21st Century is Knowledge Based!



info@firesafe.my







Kuala Lumpur Petronas Twin Towers



Evacuation Refuge Floors for Super Highrise Structures





IMPORTANT INFORMATION



Fire Action



Upon discovering a fire, raise the alarm by using the nearest fire alarm call point.



Leave by the nearest fire exit.
DO NOT use the lifts.
DO NOT stop to collect personal belongings.



Proceed directly to your assembly point at Higon Square Gardens.



Only use a fire extinguisher if it is safe to do so and you have been trained.



Upon hearing the alarm

Female voice: "Attention please, attention please. We are investigating a fire alarm condition. It may be necessary to evacuate the building. Please await further instruction."



Evacuate mobility impaired personnel to safe refuge areas.

Await further instructions.



Evacuating the building

Female voice: "Attention please, attention please. Please leave the building by the nearest available exit. Do not use the lifts".



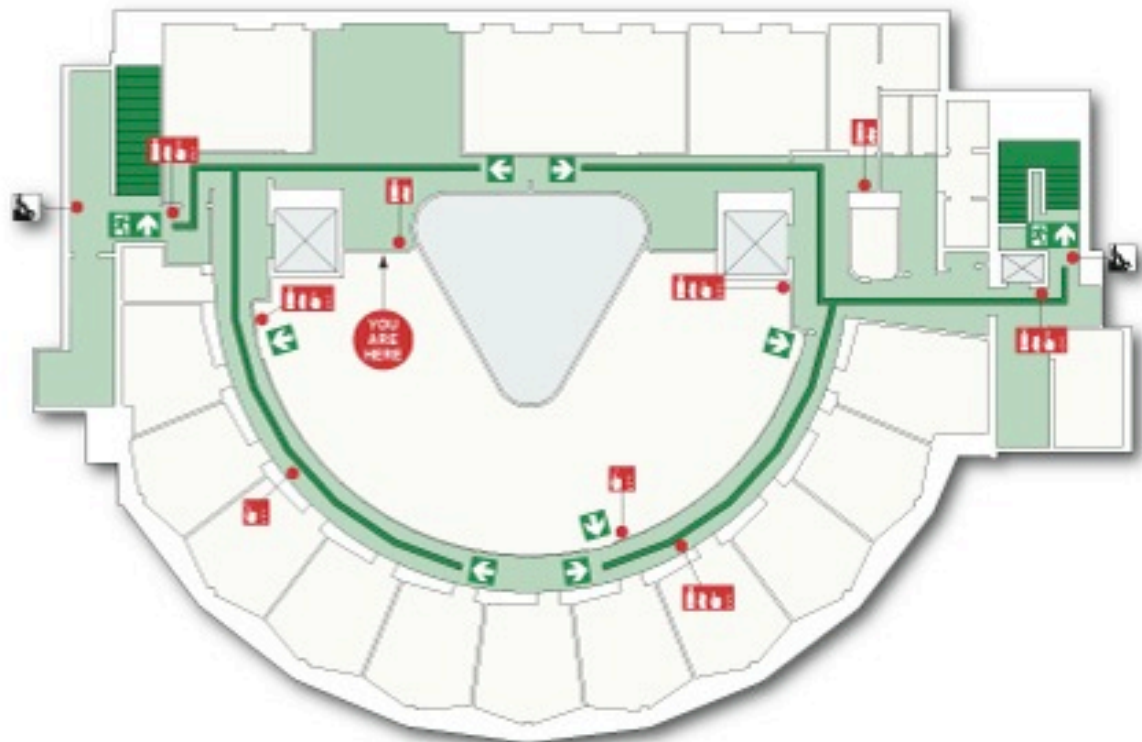
Leave the building using your nearest available fire exit.

DO NOT use the lifts.

DO NOT stop to collect personal belongings.

FIRE EVACUATION INFORMATION

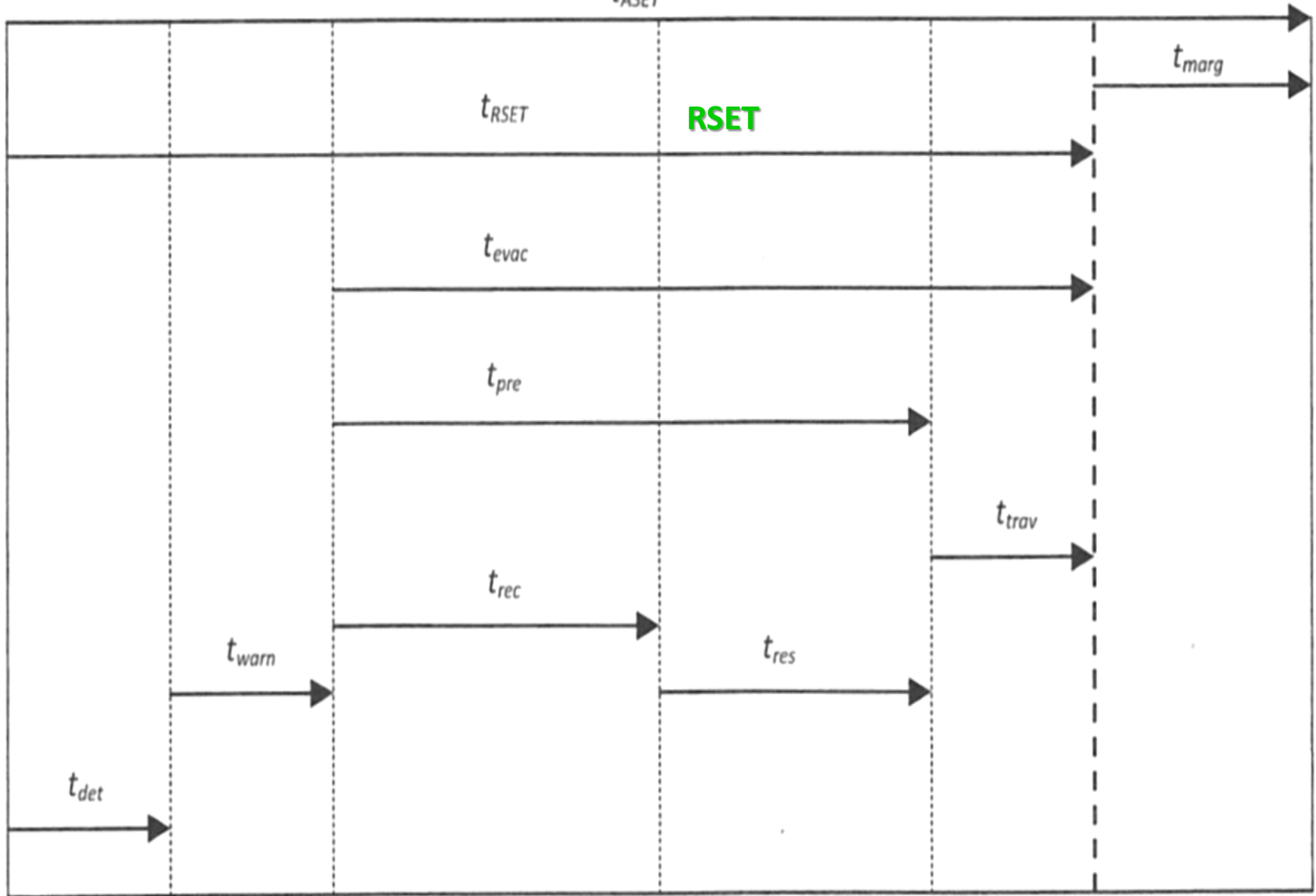
Sandhurst House, Second Floor



COMMERCIAL FIRE ESCAPE PLANS

Shirley Fire : 0945 680 0090 www.shirleyfire.co.uk

t_{ASET} **ASET**



Ignition
Automatic

Detection
Manual

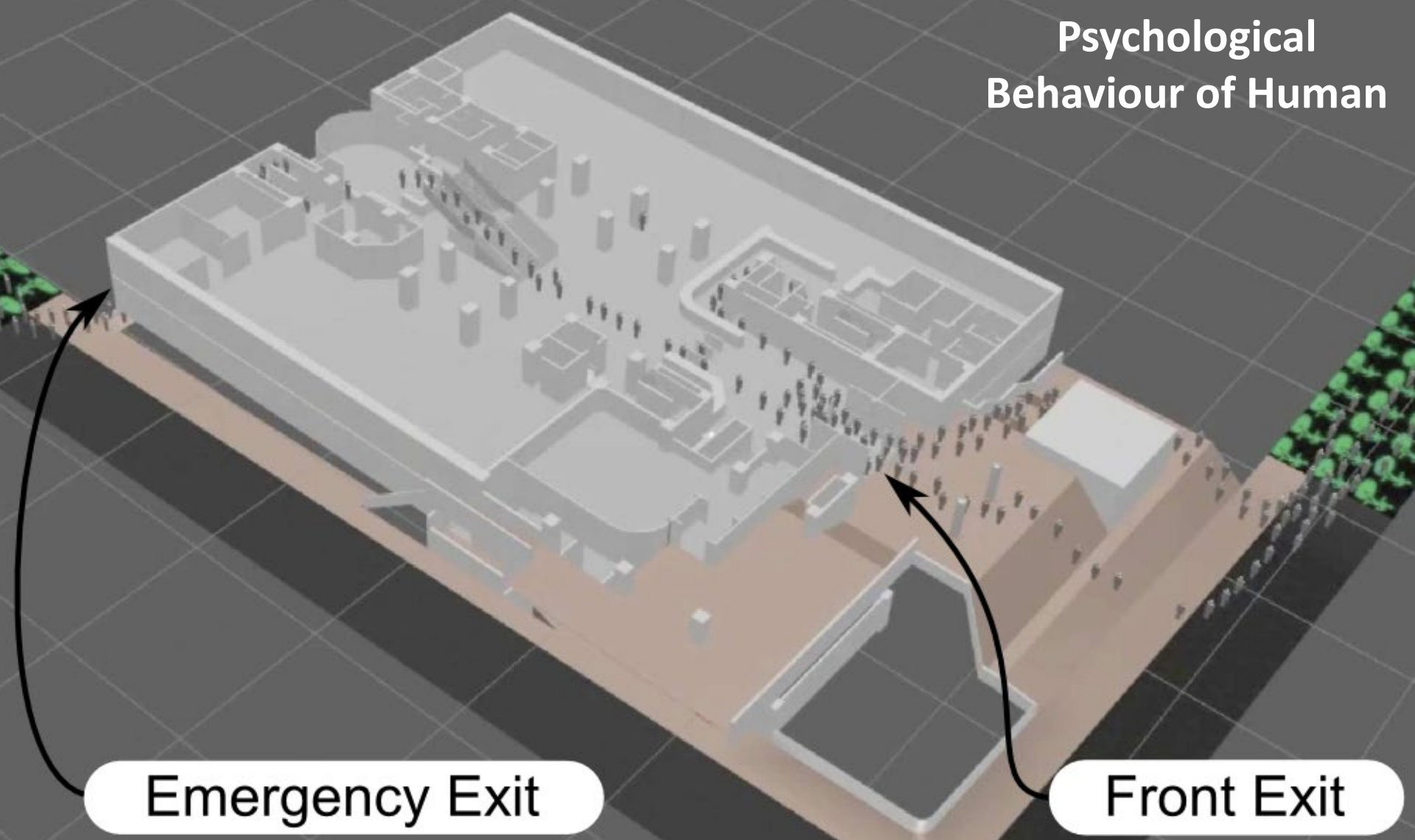
Alarm/Warning
Automatic Manual

haogiang@gmail.com

Evacuation
Complete

Tenability
Limit

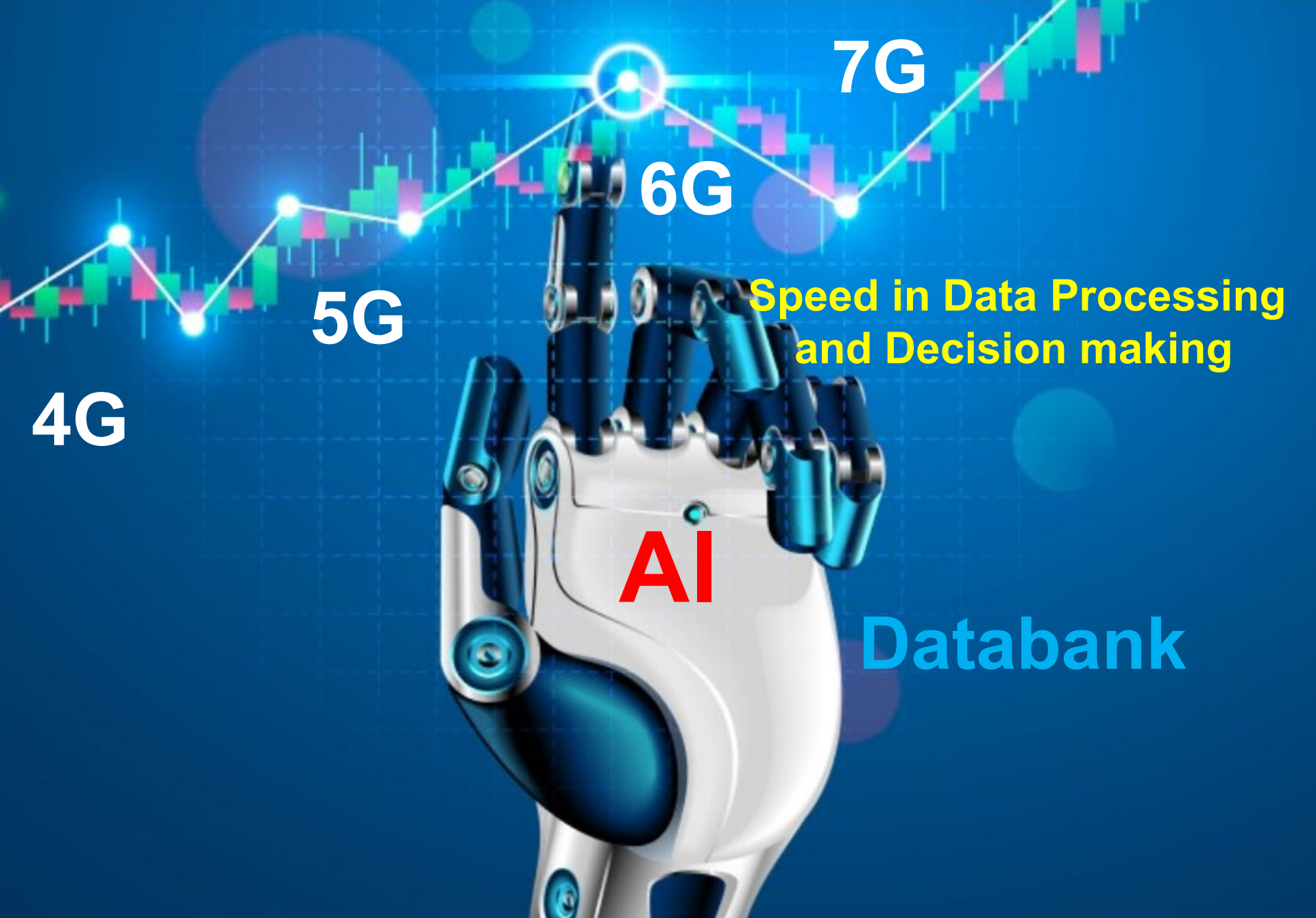
Psychological Behaviour of Human



Emergency Exit

Front Exit

Familiarity of Exit





Wireless Fire Alarm System



Wireless Smoke Detector



Wireless Manual Call Point



Wireless Strobe and Siren



Transmitter



Wireless Control Panel



同仁堂近新
館前行50米





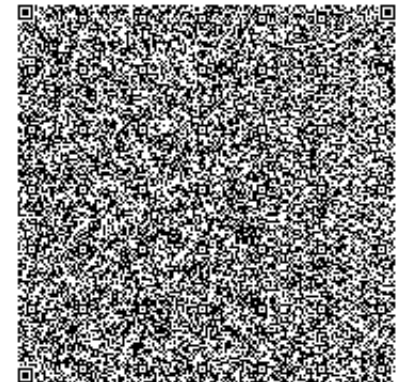
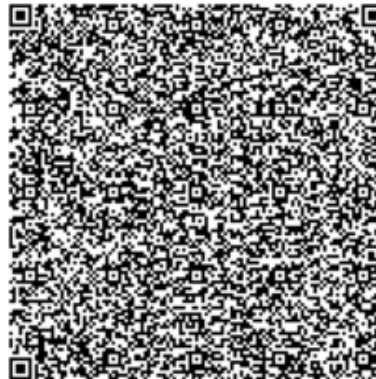
Futuristic Resilient Fire Safety Strategy With Technology

Tagging of

1. Drawings manual
2. Fire Protection components
3. Occupants
4. Monitoring of fire doors
5. Monitoring of fire extinguishers
6. Monitoring of pumpsets
7. Monitoring of fireman's' lifts
8. Monitoring of battery status



Futuristic Resilient Fire Safety Strategy With Technology





*"Strategy without tactics is
the slowest route to victory.*

*Tactics without Strategy is
the noise before defeat."*

Sun Tzu





Futuristic Resilient Fire Safety Strategy With Technology

Thank You