

MANAGING PROBATIONER: CONFIRM, EXTEND OR TERMINATE?

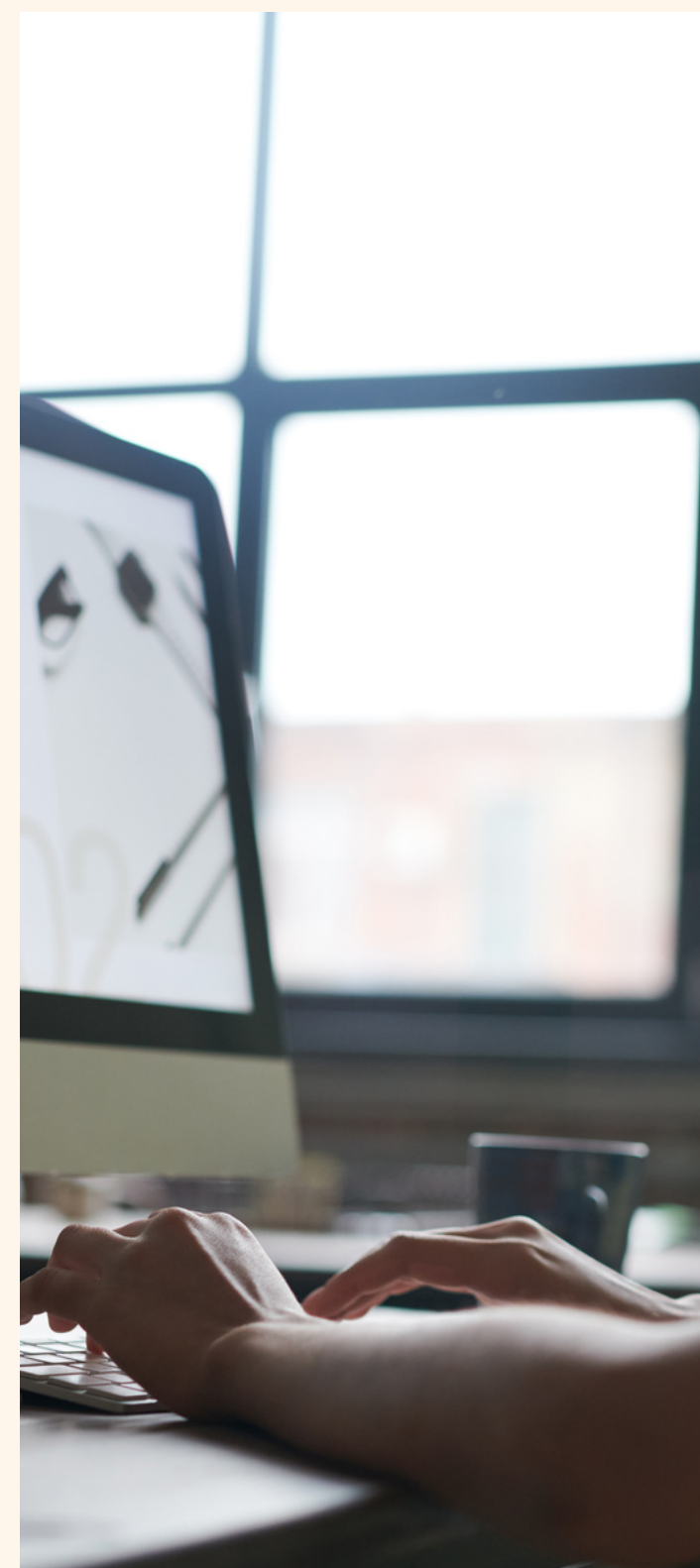
Probation period is a period to test the suitability and capabilities of an employee for the organization. At the end of this period, the employer will determine where the probationer is suitable enough to be confirmed in the organization.

AVAILABLE FOR OFFLINE & ONLINE

- Rights of a probationer
- Procedures of managing a probationer
- Decisions to be taken after probation period
- Understanding the legal implications to an employer

TARGET AUDIENCE

All personnel involved in managing employees/human resources



◆◆◆
If you have any enquiries, please call us at
03-56213630 OR email to info@comfori.com

